

Welcome to the monthly *International Polymer Clay News* from the **National Polymer Clay Guild**

A newsletter dedicated to spreading the word on all things polymer.

We need **YOU!** Please send us information on any polymer-related event, announcement, or message you'd like shared with the members. To send us your news, contact anyone on the board or e-mail me, Tammy, at execdir@npcg.org.

We will do all we can to post all of the messages we receive but do reserve the right not to list them all.

National Guild Updates

ELECTION NEWS

Polls open November 1, 2008.

Polls close November 14, 2008.

Here is a list of the nominees:

President

- Suzanne Ivester
- Jenny Murray

VP Education/Outreach

- Kerrie Venner

Recording Secretary

- Kaaren Poole

Guild Liaison

- Lenora Kandiner

International Guild Liaison

- Kylee Milner
- Toni Ransfield

Treasurer

- Karen Woods

The results of the nominee questionnaires are posted and available for your review on the [NPCG site](#); be sure to read what each candidate has to say before voting.

All current (as of 10/31/08) NPCG members will receive an election ballot via e-mail on November 1.

Election results will be posted on the NPCG website on November 21.

GUILD NAME CHANGE

The [Change Is In The Air](#) article outlined the boards desire for our organization name to more accurately reflect our membership. On October 8th, the Board unanimously voted to rename the **National Polymer Clay Guild** (NPCG) to the **International Polymer Clay Association** (IPCA).

At that point we looked to our membership for the [development](#) of a new logo, and were thrilled with the response. As part of the election process for the new Board, you will have the opportunity to vote for one of three logos designed by [Bettina Welker](#) of Germany. The logos are shown in grayscale for voting purposes, but Bettina has provided multiple color schemes for us. As polymer artists we do love our color, so expect to see the logo colors change once in awhile. Perhaps with the change of seasons, or for a special occasion...or just because!

Progress & Possibilities

Winners will be announced and posted on the NPCG. Check the [site](#) beginning 11/4 to read Julie Picarello's article on the winners!

ACREs of Opportunity

The final three artists for the NPCG booth at the ACRE show in Las Vegas have been selected! The artists who will be attending ACRE, representing the possibilities of polymer clay and taking orders for their work are: [Lauren Abrams](#), [Pat Bolgar](#) and [Barbara Fajardo](#). Congratulations ladies and good luck!

Approaching Deadlines

National Polymer Clay News – please submit any news, polymer tips or information you'd like to be considered for use in the next NPCN e-mail by November 22, 2008. Submit all information to: execdir@npcg.org.

Polymer Clay Productions is hosting classes and they're looking for teachers who are willing to "cast" from their own homes. For teaching, attending classes and the general scoop, visit Craftedonline.com.

Award/Call for Entries

Awards

Fire Mountain Gems and Beads® announced the [winners of the 2008 Beading Contest](#).

Here are a few highlights:

Susan Bailey won the People's Choice Award for her [Hokey Pokey](#) design which incorporated polymer beads within a woven seed-bead necklace

In the Kato Polyclay™ category:

- Gold Medal - Susan Bailey
- Silver Medal - Karen Poole
- Bronze Medal - Members Julie Anstaett and Eugena Topina tied

NPCG member Gwen Bernecker won for one of her metal clay design

Call for Entries

Rings & Things 2009 contest will accept entries from February 1 through February 28, 2009. In addition to the 2008 winners previously noted, Lorrene Davis won an honorable mention for one of her [metal clay designs](#).

STAEDTLER announces the 2009 Bottles of Hope Designer Challenge. Clay artists of all skill levels are encouraged to submit one or more entries for the challenge which will award charitable contributions to the cancer charity of the winner's choice plus a cash prize to winners in three categories. Product prizes will also be awarded to the top three runner-ups. Finalists will receive guest badges to the CHA 2009 show in January (Anaheim, California) where the award ceremony will take place. For rules and entry forms visit: http://staedtler-usa.com/bottles_of_hope_2009_us.Staedtler or contact Lisa Pavelka at 702-243-6564 or lispavelka@cox.net

[2009 Saul Bell Emerging Artist competition](#) is now open – deadline is December 12, 2008.

For an expanded listing of Call for Entries, visit [Art Calendar](#) magazine

Events and Happenings

Events

[SOFA – Chicago](#) – November 7-9, Chicago, IL

[Clay Carnival – Vegas](#) – November 13-16, Las Vegas, NV

[Registration](#) is open!

[Philadelphia Museum of Art Craft Show](#) – November 13-16, Philadelphia, PA

2009 Smithsonian Craft Show – April 23-26, 2009, Washington, D.C. National Building Museum

For other art events going on across the world – visit the American Craft magazines [calendar](#);

Happenings

[The Creative Place](#) – hosting many clay and clay-related classes – ongoing

Hui No'eau Gallery is hosting an event, [Artistic Alchemy](#) which features artist [Ann Kruglak](#). The exhibit runs from October 11 through November 8, 2008.

St. Theresa Textile Trove – November 16, Cincinnati, Ohio

Amy Wallace is teaching her Stacker Bead technique, register at [Ovenfriedbeads.com](#).

[New York Polymer Clay Guild](#) is hosting Lynn Ann Schwarzenberg, November 22-23, 2008. For further information please contact [Ilene Goldman](#).

Maggie Maggio will be teaching “Secrets of Smashing Color” at [North Country Studio Workshop](#) January 28-February 1, 2009, Bennington College, Vermont

[Buckeye Clay Bash](#) – February 19-22, 2009, Fairborn, Ohio (near Dayton) Registration is open now through December 31, 2008. For further information please contact [Jan](#).

Dan Cormier will be teaching a 2-day workshop on Building Better Beads – March 7-8, 2009. Tampa, Florida. Contact [Karen Woods](#) for a flyer or to register.

[Orlando Clay Fandango](#) – March 12-16, 2009, St. Augustine Beach, Florida – space is limited

Does your local guild have an upcoming workshop or class – or are you hosting a workshop or class? Log into the [NPCG website](#) to post your information and to be included in the [events calendar](#).

Not sure if there is a local guild near you? Visit the NPCG website to find a [local guild](#) – and to see the [events and classes](#) posted.

Charitable Efforts

You can help to make a difference! Check out the organizations/efforts listed below and consider sharing some of your talent, time and creativity.

[Arrowmont](#) needs your help – they have lost their lease! The Arrowmont School of Arts and Crafts has played a vital role in the growth of the NPCG. Many a polymer workshop and retreat has been held on the Arrowmont grounds. Arrowmont also provides high quality art and craft instruction and outreach to Sevier County schools and is key partner in Gatlinburg's craft community. Further, the Arrowmont School of Arts and Crafts is a key participant in a brand new Tennessee Department of Tourism initiative, undertaken as a partnership with the Great Smoky Mountains National Park, the National Geographic Society, the University of Tennessee, and the Center for Historic Preservation at MTSU. This effort, to establish “sustainable heritage tourism” in Gatlinburg, is designed to work as an

economic engine attracting high quality tourism and increased tourist revenue to the gateway cities of the Great Smoky Mountains National Park and the surrounding region.

How can you help save Arrowmont?

1. Join Friends of Arrowmont or the Signature Circle. "Friends of Arrowmont" is a program of on-going support and annual donor recognition for the school. The Signature Circle is an active patron's group of supporters who donate \$1,000 or more annually and receive invitations to exhibitions and special programs. Contributions can be made through the Arrowmont website.
2. Sign up for a workshop and bring a friend!
3. Follow all the various discussion groups on the Internet and let your others know you support Arrowmont.
4. Keep checking the Arrowmont website for the latest news and developments.
5. Volunteer your time, expertise, or other valuable assets to keep Arrowmont growing and thriving in the community.
6. Consider including Arrowmont in your long-term financial plans.

[Bead of Courage](#) and [how to help](#)

["Heats for Heroes"](#) and [how to help](#)

CERF's (Craft Emergency Relief) 11th Collection of Miniatures, titled 'Tip of the Hat,' was unveiled – take a [peek](#). Raffle tickets will soon be on sale with the drawing taking place during the 'Sofa' show in Chicago. Visit the [CERF](#) website for more information on the raffle.

[Kassie Morris](#) was published in both *Miniature Collector* and *Dollhouse Miniatures* and is seeking donations for a 1/12 dollhouse she is building. The dollhouse will be donated to benefit a local women's shelter that helped saved her life! In the future she plans to establish a foundation and donate other houses to benefit different causes including: Hospice, local nursing homes, children's hospitals and veterans. IF anyone has any items they wish to donate to her cause – please contact Kassie directly.

IN THE WORLD OF CLAY



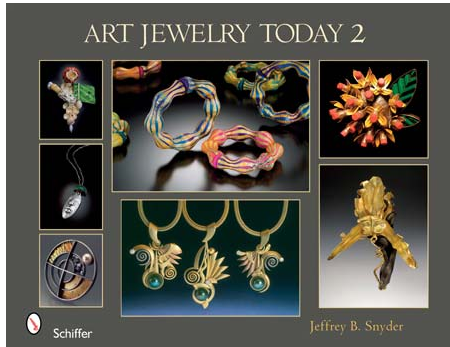
The December 2008 issue features NPCG members including Cynthia Tinapple and Gloria Spruiell.



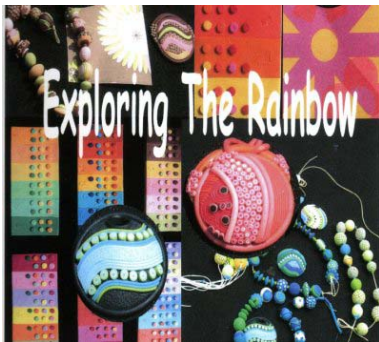
Lauren Abrams is the featured artist on the ["Art Bead Scene"](#)



A few Guild members are featured in the current issue of *Belle Armoire*



Elise Winters is featured on the cover of the newly released "Art Jewelry Today 2" by Jeffrey B. Snyder. The book features over 550 color photos of wearable artwork produced by today's top art jewelers. The work includes work in gold, silver, mixed metals, glass, enamel, found objects and more.



Exploring the Rainbow is a Hot-Off-The-Press booklet by Tina Holdman available through the Mile-High Polymer Clay Guild. The booklet contains over 100 recipes, including color-mixing background information. Contact [Karen Sexton](#) for more information or to order your copy.

This is the space for you! Be sure to drop us a note for consideration in the next NPCN letter; deadline November 22, 2008.

Local Guild News

A new Guild is forming in central Vermont. Anyone interested in joining the group can contact [Christine Damm](#) for more information.

A new guild is forming in Massachusetts in the Pioneer Valley. Contact [Peg Gerard](#) for more information.

[Additional Local Guild News](#) updates are available at the NPCG website.

Ongoing Multi-Media Happenings and Blogs

[Craft Cast](#) – podcasts hosted by Alison Lee – download artist interviews for use on your iPod

[Swoondimples](#) – Heather Wynn's blog

[Polymer Clay Daily](#) – Cynthia Tinapple's blog

[Polymer Art Archive](#) – Elise Winters' blog

[Polymer Clay Craft Gossip](#) – Heather Power's blog